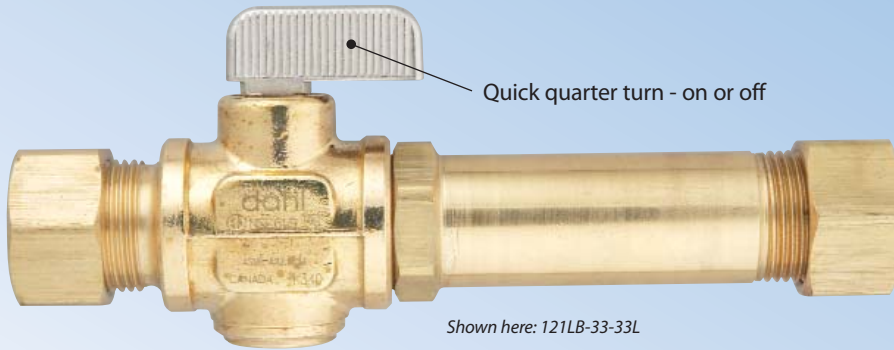


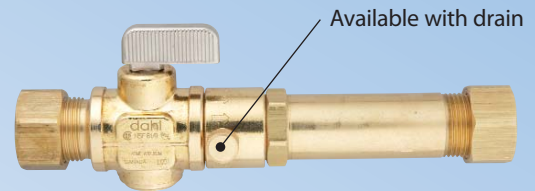
NO SOLDER REPLACEMENT VALVES



For 1/2" and 3/4" Copper Pipe

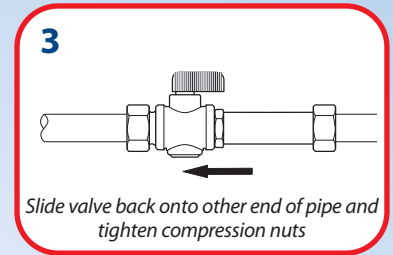
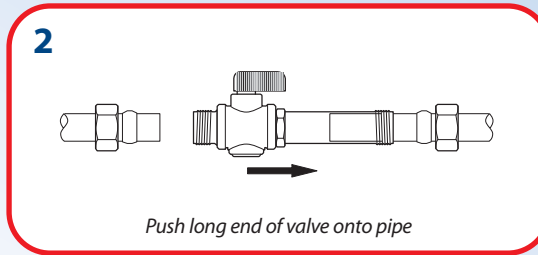
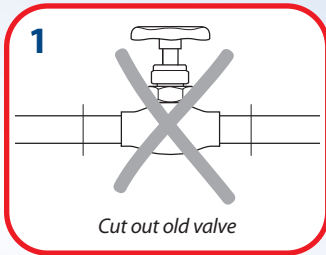


Shown here: 121LB-33-33L



Shown here: 121LB-33-33LD

Installs easily, even on wet pipe!



Superior flow to old globe valves

Globe Valve	No Solder Valve
<p>Globe Valve 1/2" - Cv = 2.25 3/4" - Cv = 4.0</p>	<p>No Solder Valve 1/2" - Cv = 7.5 3/4" - Cv = 6.5</p>
<p><i>Cv = Flow in USGPM with 1 PSI pressure drop</i></p>	
<p>Better Flow with Dahl 1/4 Turn Valves</p>	



sales@dahlvalve.com
 1.800.268.5355 CAN Toll-Free
 1.800.268.2363 US Toll-Free
 1.800.226.1801 CAN & US Fax



TURN TO QUALITY. TURN TO DAHL.™